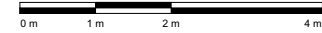
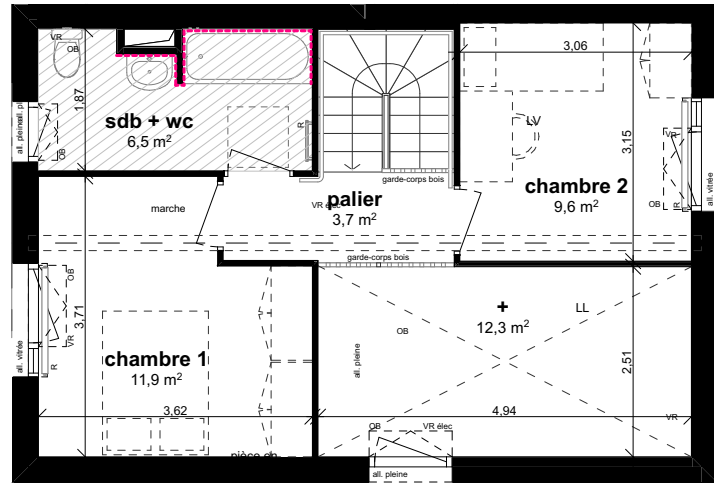


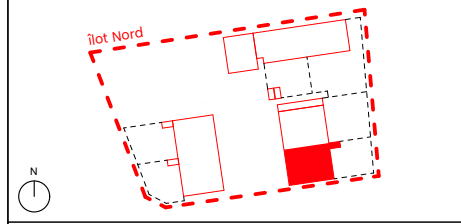
R1



**Les Cours Communes**  
 Ilot Nord  
 44830 BRAINS



**B - RDC - R1      B002      T3 duplex**



|                    |         |
|--------------------|---------|
| entrée             | 2,8 m2  |
| séjour             | 30,2 m2 |
| cuisine            | 6,9 m2  |
| cellier            | 4,2 m2  |
| wc                 | 1,2 m2  |
| palier             | 3,7 m2  |
| chambre 1          | 11,9 m2 |
| chambre 2          | 9,6 m2  |
| salle de bain + wc | 6,5 m2  |
| extension possible | 12,3 m2 |

**surface totale SHAB 77,0 m2**

|                 |         |
|-----------------|---------|
| jardin          | 62,8 m2 |
| abris de jardin | 2,4 m2  |

**PLAN DE COMMERCIALISATION**

DECEMBRE 2022

**PV : BAT\_B\_RDC\_R1\_B002**

RDC

B002

